

# OWNERS HANDBOOK



**VOLKSLEISURE**<sup>TM</sup>  
CAMPERVANS



THE SIXTH GENERATION OF A DESIGN ICON

BEAUTIFULLY CONVERTED BY VOLKSLEISURE



## WELCOME & INTRODUCTION

### Thank you for choosing a Volksleisure VW Campervan

Before you drive off on your adventures, please familiarize yourself with the campervan and read this owners handbook. This will help you to obtain the maximum pleasure from your vehicle and avoid endangering yourself and others.

This handbook should be used in conjunction with the Volkswagen owners manual for the base vehicle and the detailed appliance instruction manuals contained in your manual pack.

Your new Volksleisure campervan has been designed as a recreational vehicle and is intended for recreational use only. It is not intended for business use or for permanent habitation. Volksleisure accepts no liability if the campervan is used for any purpose other than recreational/holiday use.

By following the instructions provided in this handbook and maintaining your campervan in a first class roadworthy condition, you are sure to have many years of carefree use. To ensure the very best quality and reliability, all campervan designs and new developments are rigorously tested. Therefore Volksleisure will accept no liability or uphold the warranty if the campervan is altered or modified in such a way that would adversely affect the reliability.

Changing market and supply situations may prevent us from maintaining the exact specification details in this guide and we therefore reserve the right to alter specifications and materials as conditions demand, and supply an alternative.

Enjoy your new campervan

Neil Worthington  
Managing Director



# Instruction Manual

## Volsleisure Zermatt Model

Thank you for choosing Volsleisure to build and supply your new Camper. Please find details below on the technical aspects of your new Zermatt Model.

### Electrical System

Your new camper is fitted with a split charge system which charges the 110Ah leisure battery when the engine is running. If fitted, the 100w Solar panel with regulator also charges the leisure battery at all times. This system is automatic so you do not have to do anything.

When you are parked on site you can also plug into the 240v Mains. The hook-up is located in one of the following locations (*depending upon customer preference*).

- Under the near side rear of your camper (*Standard location as shown in photo*)

If your campervan is ordered directly from the factory, the hook-up can be placed in the following locations:

- Under the bonnet on the near side
- On the rear off side panel



Once you have connected your supplied hook-up cable to your campervan and plugged into mains post you are now ready to check your RCD.

### RCD

The RCD (*Residual Current Device*) is located as shown below.

***Check that all trips are in the UP position.***



Bottom of Wardrobe

Your camper is now running on Mains power. This means that your camper's transformer charger is supplying and charging your Leisure Battery, Fridge and Lights. You can now also use the 2x double mains sockets supplied.



***Your Camper has a built in safety system so that none of the above can overload the systems fitted.***

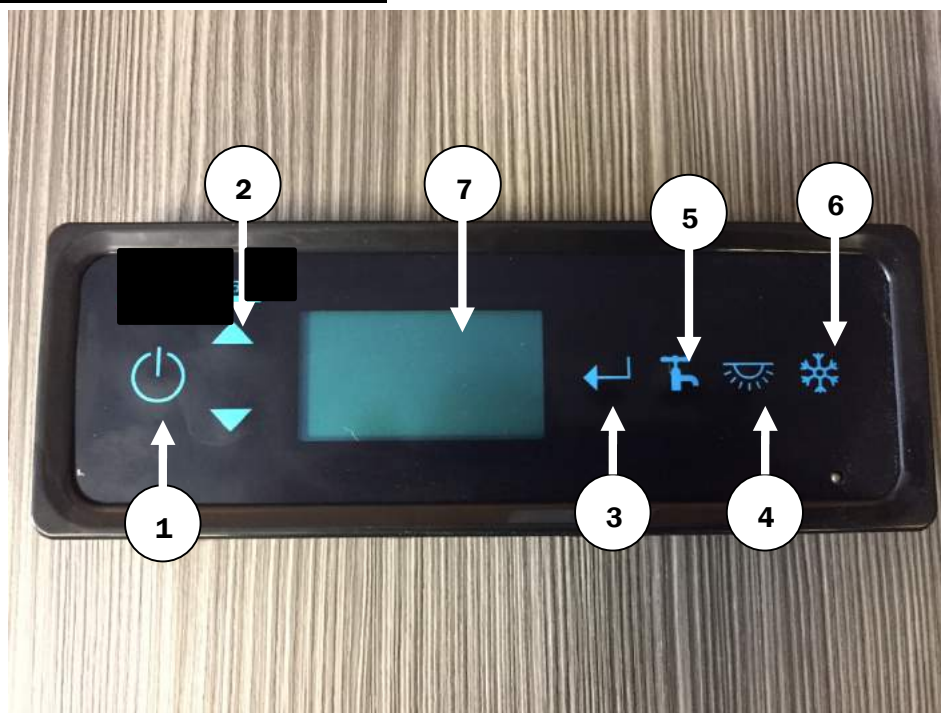
## **Leisure Battery**

The 110Ah leisure battery is located under the driver seat and is maintenance free.

## **Control Panel**

All campers' come with our simple to use control pane which controls all the 12v lights and appliances. There are two different versions so please choose the appropriate instructions below based upon the model fitted to your campervan.

### **Control Panel – New Version**



#### **1. Master Switch**

When pressed will switch power to all non-essential accessories. Holding down the master switch will cause the panel to shut down completely.

#### **2. Up & Down**

Lets you scroll though the display menu.

#### **3. Navigation Buttons**

Use to enter selected options from the menu.

#### **4. Lights Switch**

Switch's on the leisure lights (Some campers also come with a remote control for lights).



## 5. Pump

This turns on the pump.

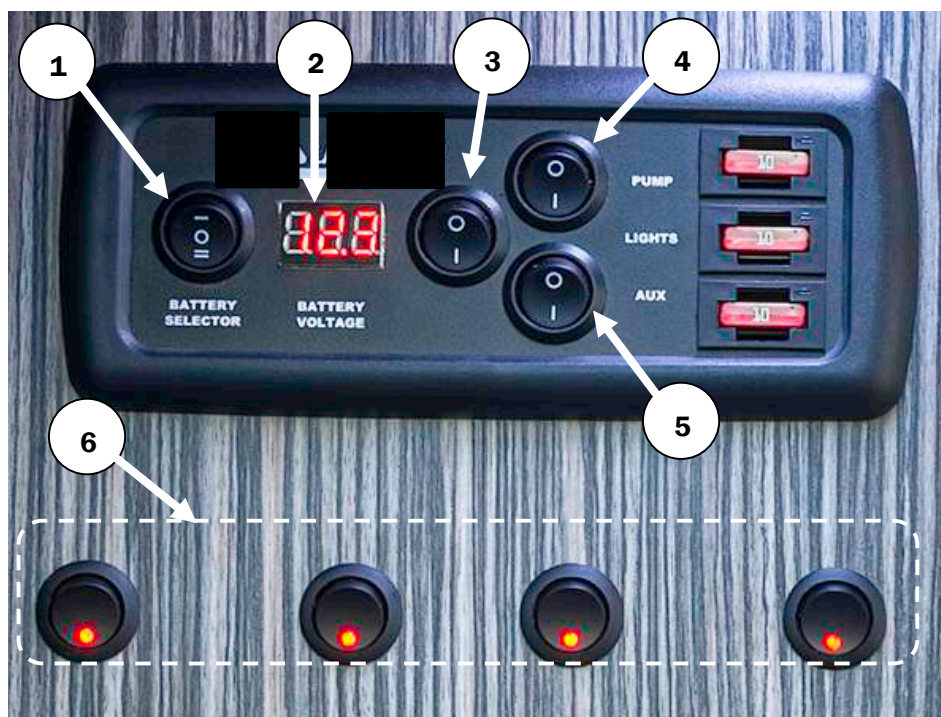
## 6. Snow Flake

This turns on the fridge.

## 7. Display


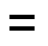

Shows selected option.

## Control Panel – Original Version



### 1. Battery Selector (Master Switch)

The master switch marked **Battery Selector** has three settings:

<b>Central</b>		Master Switch is Off. This means all 12v Lights and Appliances are switched off.
<b>Down</b>		Leisure Battery. You have now selected the Leisure Battery to power your 12v Lights and Appliances.
<b>UP</b>		Vehicle Battery. You have now selected the Vehicle Battery to Power your 12v Lights and Appliances ( This is not recommended and should only be used in emergencies )

### 2. Battery Condition LED

The Battery Condition LED Gauge is located next to the Master Switch and indicates the power in the selected battery.

### 3. Light Switch (6)

The light switch is located in the centre of the control panel. When this switch is down you can operate the 4 switches directly below the control panel (Labelled in the diagram). With all 4

switches down all lights will be operating or you can turn off individually to get the right amount of light)

#### **4. Pump Switch**

When in the down position the pump switch operates the water pump.

#### **5. Aux Switch**

When in the down position the Aux switch operates the Fridge and the 2x 12v sockets.

### **Water System**

Your Camper comes with a 30 Litre fresh water tank and in-line pump which supplies cold water to the sink tap (*and beach shower if fitted*).

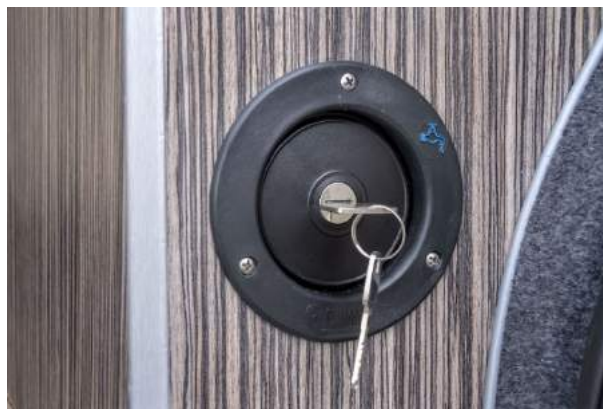
If your camper comes with a Diesel or Gas-Electric hot water system they both work in the same way. When the pump is switched on the tap automatically operates the pump.

If hot water is fitted the temperature control will be located on the main Control Panel.



Water is refillable at the rear of each model.

- Located on the off side rear (next to the Gas Locker Box). You can see the water level in the tank as it is illuminated by a 12v LED light.



***It is recommended that the tank is sterilised periodically using a water treatment solution such as Puriclean***

## **Gas System**

Your campervan is fitted with the New Volksleisure Gas Locker Box, located at the rear of the vehicle, which houses a 907 camping gas bottle (not supplied). The new locker box meets the latest NCC regulations and includes bulkhead 30mb EN16129 regulator, isolation tap, retaining strap and drop vents.



***Gas vents are fitted in the base of the gas locker box. This must not be blocked or obstructed and must be accessible for cleaning***

## **OPTIONAL**

Externally mounted LPG tank (1), regulator, filling point (2) & BBQ point (3). The tank is located behind the spare wheel on the underside of the vehicle.

When this system is fitted the vehicle will normally come with a Propex HS2000 Hot Air Heater.

This system adheres to the following regulations:

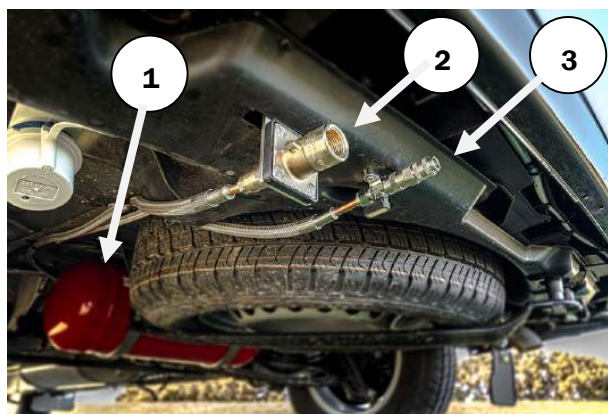
ECE UN67R-01

Certificate Number E3-67R-0158416

ECE UN R6701

EC-87/01/03/M3

BS EN 624: 2000



***The external LPG Tank and pipework must be inspected annually by a qualified gas fitter***



## Kitchen Appliances

Your Camper comes with the following items as standard:

**SMEV combination sink and twin hob**



*Gas Appliances must only be used when the Elevating Pop-Top Roof is open*



**50 Litre Compressor Fridge with freezer compartment**



**OPTIONAL SMEV 20 Ltr Oven/Grill**





## Furniture

The Furniture fitted to your camper is made from light weight furniture ply and covered with high pressure foil laminate with is dry heat resistant (EN 438-2).



**WARNING:** The furniture has floor level ventilation which must not be blocked or obstructed.



## Rock n Roll Seat-Bed

The RIB seat-bed systems are easy to use and very comfy to sleep on. They come with 3-point seat belts and have been tested with our own fixing frames to ensure you and your family's safety.



***Our campervans have passed VCA Type Approval. This means our campervans are designed to meet specified performance standards.***

## **To Make Bed**

1. Retract the headrests (if included)



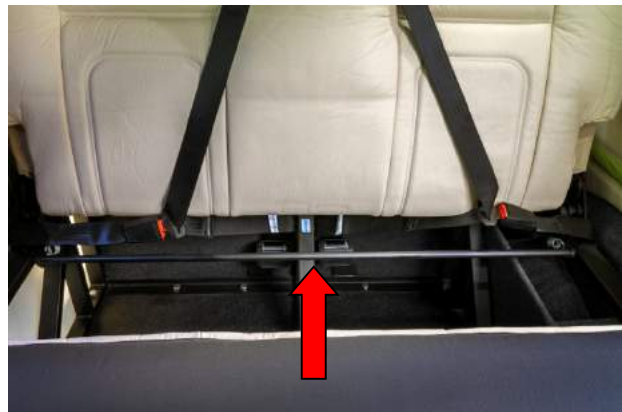
2. Push the black lever located on the near side of the seat



3. Pull the back edge of the seat base towards you. *Note: if you let go of the lever the base will stop at any point.*



4. Flip the base over until it is horizontal and release the black lever



5. This will reveal a horizontal black bar. Pull this bar upwards and pull the seat back towards you until horizontal.



6. The rear bed section has a black lever on the near side, similar to the front section. Pull this lever and lower it to a horizontal position.

7. To convert the bed back into a seat simply reverse the operations above.

## Front Seats



*When first fitted the seat swivels can be a little stiff so we advise customers not to over-exert themselves. It may take a couple of goes to learn the best technique.*

### Using the Seat Swivels

1. When rotating the driver's seat it is necessary to release the handbrake. Firstly put the vehicle into first gear and **slowly** release the handbrake. The vehicle may settle slightly.



2. Raise the seat to its highest setting using the ratchet lever on the outside of the seat. This is necessary to give clearance over the seat base (and handbrake for the driver's seat)

3. The swivel release knob is located on the side of the seat base, with an orange handle (*this may differ dependent on make of swivel base available at time of manufacture*).

4. Pull the knob to one side and simultaneously rotate the seat slightly.



5. In order to fully rotate the seat you will need to adjust the backward/forward position of the seat. The slide release is located at the front of the seat base.

7. Once fully rotated the seat back and seat backward/forward positions can be adjusted for comfort.

6. It may also be necessary to adjust the angle of the seat back to give clearance to the door frame



## **Elevating Roof**

All Volksleisure Zermatt Camper comes with Reimo Elevating roof (with the option of a roof bed).



Elevating Roof

## **Opening the Roof**

1. Undo the straps from the inside of the roof:

*Two straps are located at the front of the roof above the front seats*

*Depending upon the model of roof fitted the straps will be as follows:*

### **Reimo Roof Strap**



2. Standing at the elevating end (*fitted with two handles*) push the roof upwards.

*Note: If all doors are shut this may require more effort as air is drawn into the cabin.*



## **Closing the Roof**

- Grasping the two handles stand facing towards the hinges along the roof.
- Pull the roof down slowly allowing the air to escape from the cabin.
- Reattach the straps and ensure they are pulled firmly to secure the roof in place.



***If you pull the roof down too fast the air will push the roof bag outwards which risks trapping the bag in the scissor hinge.***

***Do not drive the vehicle with the roof unsecured.***

## **Caring for your Roof**

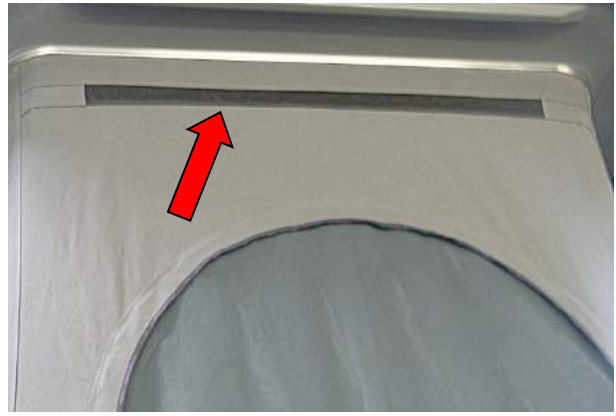
We recommend that customers take the following steps to ensure the safety and longevity of their roof.

1. If the fabric of your roof becomes wet we recommend opening the roof and allowing the material to dry. Leaving the roof closed whilst wet may lead to mould growth or cause the material to perish.
2. We recommend occasionally applying a water repellent to the roof material to prevent the ingress of water or damage to the fabric. Water repellent can be purchased from your local motorhome or camping shop.
3. We would recommend that the roof should not be left open in strong winds as this could cause damage to the material or hinges.



regularly

The elevating roof comes with a top mesh vent that must not be blocked or obstructed. The roof vent must be vacuum cleaned



## Wheels

The spare wheel is located underside at the rear of Camper.



Depending upon your model your jack and brace are located as follows:



Located in the rear of Camper on the near side wheel arch.



***Customers should be aware that it is recommended that wheel nuts should be checked at regular intervals. We recommend checking after the first 40 miles as some settling may occur.***

# **Volkswagen Warranty**

## **Volkswagen Warranty**

Brand new VW Transporters, which form the basis of our campervan conversions, are covered by the standard Volkswagen 3 Year warranty. Unlimited warranty in first two years and limited to 100,000 miles in the third year.

## **Parts & Appliances**

Third party components and appliances used within the manufacture of your campervan (such as ovens, fridge and ovens) are covered by the standard 12 Month manufacturer's warranty.

## **Volkswagen Warranty**

Volkswagen offers a full 3 year warranty on workmanship of our campervan conversions.

If warranty issues cannot be resolved over the phone the vehicle must be returned to our factory for rectification in the South West of England. Warranty is limited to the repairs agreed and does not cover travel and expenses.

## **Need Help?**

This instruction manual hopefully covers the main technical aspects of your new campervan. If any of the instructions are unclear, or if you have any further questions, please do not hesitate to drop us a call. We are here to Help.

**Tel: 07860 366888**

**[info@volksleisure.com](mailto:info@volksleisure.com)**

**[www.volksleisure.com](http://www.volksleisure.com)**



**VOLKSLEISURE**<sup>TM</sup>  
CAMPERVANS

Upperbridge House, 24 Huddersfield Road, Holmfirth, West Yorkshire HD9 2JS

Phone: **07860 366888** Email: **info@volsleisure.com**



**volsleisure.com**

